



Beausoleil First Nation Housing Department Rapid Housing Initiative Update (RHI)– August 2021

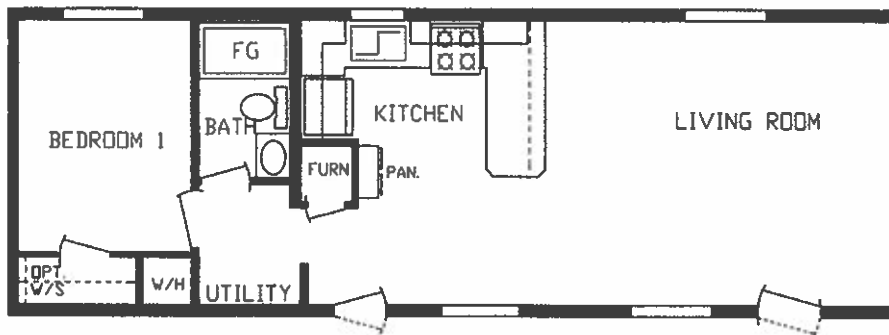
Beausoleil First Nation is pleased to announce that a contract has been signed with Best Buy Homes to provide 10 new modular homes for the Community and currently on order. It is anticipated that this exciting Initiative can still be completed within the expected time frame by the end of November 2021.

The RHI supports the new construction of a modular multi-unit rental projects, which includes the acquisition of the land. Minimum five units must be created with this initiative, up to the maximum of 10 units. Modular is defined as housing units that are partially or fully built in off-site facilities by qualified manufacturer and delivered to the site and set up. All units must be affordable (household is paying less than 30% of gross income on housing costs) to targeted populations who are at risk of homelessness. All affordable units must be dedicated to vulnerable populations targeted under the National Housing Strategy (NHS). These population groups include: Indigenous people, homeless people or those at risk of homelessness, women and their children fleeing domestic violence, seniors, young adults, people with disabilities, people dealing with mental health and addiction issues, veterans, and LGBTQ2+.

The Intention of the program is to benefit the vulnerable population by alleviating the current crisis and protecting individuals from homelessness.

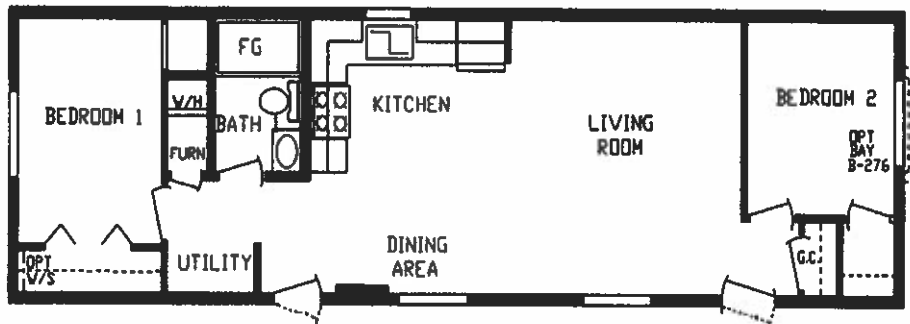
The 10 Modular units will consist of:

- 5 – 1 bedroom units (2 units will be fully accessible for seniors and/or disabled occupants)



Newdale Model / 1 bedroom / 1 bath / 14'x44' / 616 sq. ft

- 5 – 2 bedrooms units (2 units will be fully accessible for seniors and/or disabled occupants)



Manitou Model / 2 bedroom / 1 bath / 14 x 52 / 728 sq. ft

Highlights:

Low E Thermopane Windows | Exterior Weather Wrap with Vinyl Siding | OSB Exterior Sheathing Sidewalls & Endwalls R-60 Roof Insulation | 2x6 Sidewalls with R-24 Insulation | R-31 Floor Insulation Residential High Efficiency Furnace | 8ft Sidewall Height | Rafters 24in O.C. | 2x10 Floor Joists 3/4in Tongue & Groove OSB Floor Decking | Architectural Shingles Roll goods in Baths, Kitchen, Dining Room, Utility & Foyer GFI Bath & Kitchen Receptacles Smoke Alarms with Carbon Monoxide Detectors | Glass Ceiling Light Fixtures in all Bedrooms Heat Tape Recept with Lighted Switch | Water Shut-Off Valves Throughout | Fiberglass Tub in Baths Vinyl on Gypsum Walls w/Lauan Substrate on Outside Walls | Residential Full Size Electric Water Heater | Appliances

Some photos of the Newdale Model, Manitou Model is built to similar Style and finishes

